

T6 STYLE #:

STYLE SHEET

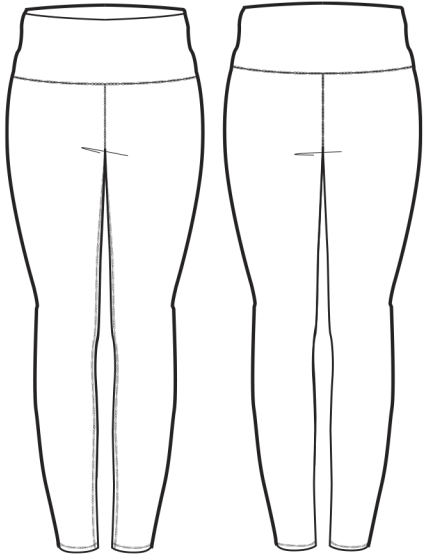
W017-ST014

17

STYLE NAME: **LEGGING 5-PAN - 17**
DESCRIPTION: WOMEN'S FULL LENGTH LEGGING- 5 PANEL
FABRIC: **#ST014** 73% DTY POLY 27% SPAN ULTRASOFT PEACHED JERSEY
SIZES AVAILABLE: XS, S, M, L, XL, 2XL

LABELS & PACKAGING:

Label:	Placement:
Standard Main Label	CB WB Printed
Standard Size Label	Inside CB seam- Centered
Care Label	Inside CB seam-Centered



Special Instructions:

FINISHED MEASUREMENTS:

P.O.M- Inches	XS	S	M	L	XL	2XL	3XL	4XL
A-INSEAM	30.5	31	31.5	32	32.5	33		
B- Waist at top of band	10	11	12	13	14	14 7/8		
C- Hips- 3" down from WB Seam	14 1/4	15 1/4	16 1/4	17 1/4	18 1/4	19 3/4		

Style Sheet Disclaimer:
This is a Technical Specification Sheet with Points of Measurement (P.O.M). This is a technical design document used as a guide for production consistency. Style sheets are not intended to be used as a Sizing Chart nor to be given directly to customers. As per industry standard there is a tolerance of +/- one inch on measurements. Knitwear specs are based on flat lay measurements. Woven specs are based on circumference. To retain the garment's best condition & longevity please follow appropriate care instructions.