

T6 STYLE #:

STYLE SHEET

W546-AC001

222B

STYLE NAME:

HOODIE CROP LS 65/35- 222B

DESCRIPTION:

WOMEN'S CROPPED LONG SLEEVE HOODIE IN 85 X 15
65/35 POLYESTER RAYON, BLENDED FLEECE, 10-10.5 OZ

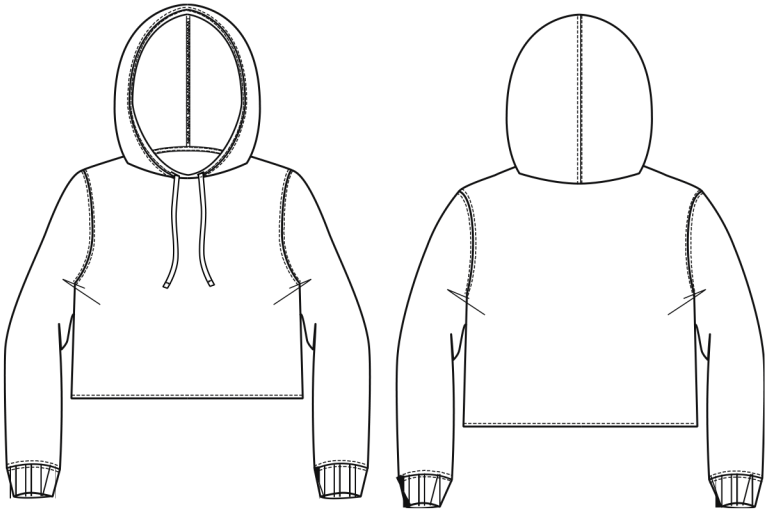
FABRIC: #AC001

SIZES AVAILABLE:

XXS---XXL

LABELS & PACKAGING:

| | |
|---------------------|-----------------------------|
| Label: | Placement: |
| Standard Main Label | Inside CB |
| Standard Size Label | Inside CB |
| Care Label | W-Inside left SS, 3" up hem |



Special Instructions:

*DUE TO BLENDED FABRIC COMPOSITION, PRINT MAY
APPEAR MUTED IN COLOR*

FINISHED MEASUREMENTS:

| P.O.M- Inches | XXS | XS | S | M | L | XL | 2XL | |
|----------------------------|-----|--------|--------|--------|--------|--------|--------|--|
| A- Length: HPS to Hem Edge | 15 | 15 5/8 | 16 1/8 | 16 7/8 | 17 3/8 | 17 7/8 | 18 3/4 | |
| B- Chest 1" below armhole | 16 | 16 5/8 | 17 1/2 | 18 1/2 | 19 1/2 | 21 1/8 | 22 5/8 | |

Style Sheet Disclaimer:
This is a Technical Specification Sheet with Points of Measurement (P.O.M). This is a technical design document used as a guide for production consistency. Style sheets are not intended to be used as a Sizing Chart nor to be given directly to customers. As per industry standard there is a tolerance of +/- one inch on measurements. Knitwear specs are based on flat lay measurements. Woven specs are based on circumference. To retain the garment's best condition & longevity please follow appropriate care instructions.