

T6 STYLE #:

## STYLE SHEET

W521-ST022

190

STYLE NAME:

DESCRIPTION:

FABRIC: ST022

SIZES AVAILABLE:

### SWEATSHIRT DROP - 190

LONG SLEEVE DROP SHOULDER SWEATSHIRT WITH CURVED HEM

95% SPUN POLYESTER 5% SPANDEX FRENCH TERRY

XXS---3XL

#### LABELS & PACKAGING:

Label:

Standard Main Label

Standard Size Label

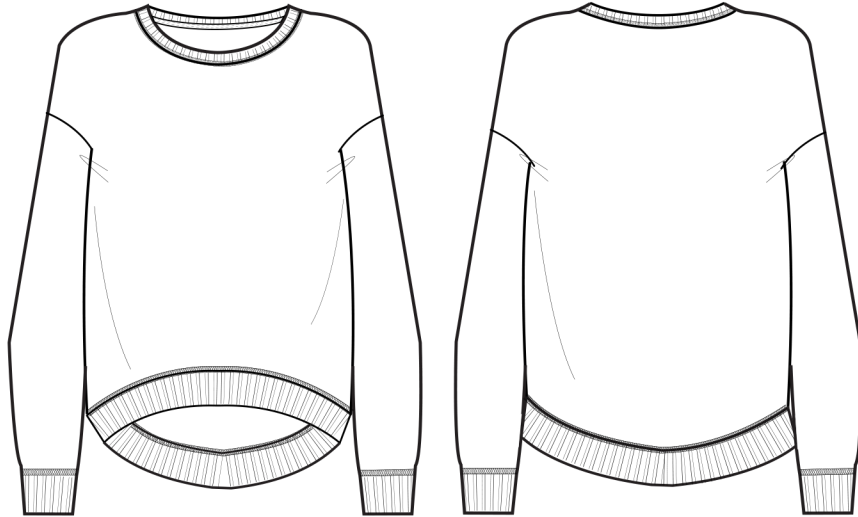
Care Label

Placement:

Inside CB

Inside CB

W-Inside left SS, 3" up hem



#### Special Instructions:

#### FINISHED MEASUREMENTS:

| P.O.M- Inches                   | XXS    | XS     | S      | M      | L      | XL     | 2XL    | 3XL    |
|---------------------------------|--------|--------|--------|--------|--------|--------|--------|--------|
| A- Length: HPS to Hem Edge      | 21 1/8 | 22 1/8 | 23 1/8 | 24 1/8 | 25 1/8 | 26 5/8 | 28 1/8 | 29 5/8 |
| B- Chest- Across 1" blw Armhole | 17 3/8 | 18 3/8 | 19 3/8 | 20 3/8 | 21 3/8 | 22 7/8 | 24 3/8 | 25 7/8 |
| C- Waist- Across 14" blw HPS    | 17 1/8 | 18 1/8 | 19 1/8 | 20 1/8 | 21 1/8 | 22 5/8 | 24 1/8 | 25 5/8 |

#### Style Sheet Disclaimer:

This is a Technical Specification Sheet with Points of Measurement (P.O.M). This is a technical design document used as a guide for production consistency. Style sheets are not intended to be used as a Sizing Chart nor to be given directly to customers. As per industry standard there is a tolerance of +/- one inch on measurements. Knitwear specs are based on flat lay measurements. Woven specs are based on circumference. To retain the garment's best condition & longevity please follow appropriate care instructions.