

T6 STYLE #:

STYLE SHEET

W551-ST022

242

STYLE NAME:

HOODIE ZIP WMN

DESCRIPTION:

WOMENS ZIP UP HOODIE

FABRIC: #ST022

95/5 POLYESTER -SPANDEX FRENCH TERRY, 255 GRMS

SIZES AVAILABLE:

2XS----2XL

LABELS & PACKAGING:

Label:

Placement:

Main Label:

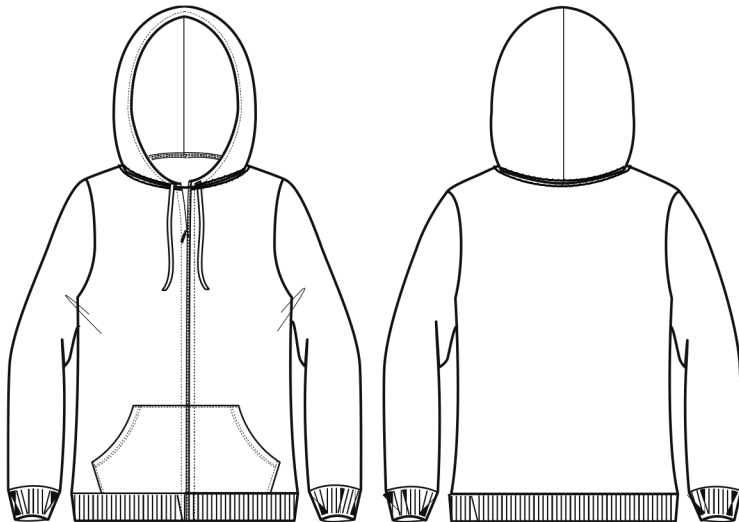
Inside CB

Size Label:

Inside CB

Care Label

W-Left SS 3" Up from Edge



Special Instructions:

FINISHED MEASUREMENTS:

P.O.M- Inches	XXS	XS	S	M	L	XL	2XL	3XL	4XL
A- Length: HPS to Hem Edge	21 1/4	22 1/4	23 1/4	24 1/4	25 1/4	26 3/4	28 1/4		
B- Chest- Across 1" blw Armhole	14 7/8	15 7/8	16 7/8	17 7/8	18 7/8	20 3/8	21 7/8		
C- Waist- Across 14" blw HPS	14 1/4	15 1/4	16 1/4	17 1/4	18 1/4	19 3/4	21 1/4		

Style Sheet Disclaimer:

This is a Technical Specification Sheet with Points of Measurement (P.O.M). This is a technical design document used as a guide for production consistency. Style sheets are not intended to be used as a Sizing Chart nor to be given directly to customers. As per industry standard there is a tolerance of +/- one inch on measurements. Knitwear specs are based on flat lay measurements. Woven specs are based on circumference. To retain the garment's best condition & longevity please follow appropriate care instructions. (edited)