

T6 STYLE #:

STYLE SHEET

W312-ST013

312

STYLE NAME:

BIKER SHORTS - 312

DESCRIPTION:

WOMEN'S BIKER SHORTS- 5 PANEL

FABRIC: **#ST013**

46% CATIONIC POLY-38% POLY-16% SPANDEX--PFP WARM GREY HTHR

SIZES AVAILABLE:

XS-2XL

LABELS & PACKAGING:

Label:

Placement:

Standard Main Label

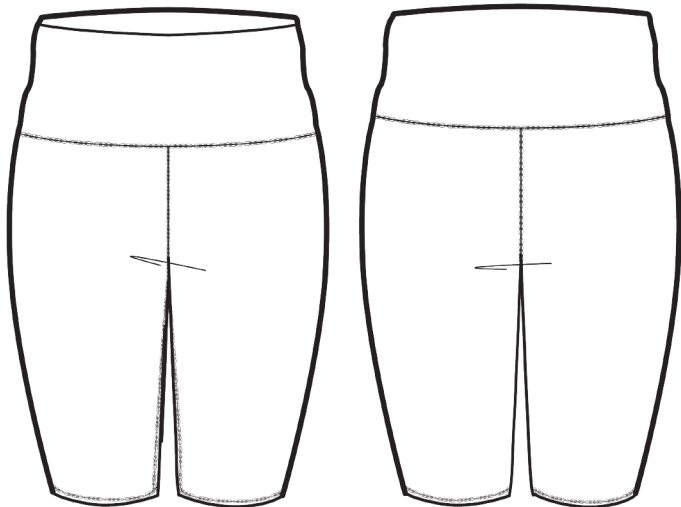
CB WB Printed

Standard Size Label

Inside CB seam or Print @WB

Care Label

Inside CB seam or Print @WB



Special Instructions:

FINISHED MEASUREMENTS:

P.O.M- Inches	XS	S	M	L	XL	2XL	3XL	4XL
A-INSEAM	7 1/2	8	8 1/2	9	9 1/2	10		
B- Waist at top of band	10	11	12	13	14	15		
C- Hips- 3" down from WB Seam	14 1/4	15 1/4	16 1/4	17 1/4	18 1/4	19 1/4		