

T6 STYLE #:

STYLE SHEET

W317-ST014

317

STYLE NAME:

BIKER SHORTS - 317

DESCRIPTION:

WOMEN'S BIKER SHORTS- 5 PANEL

FABRIC: #ST014

73% DTY POLY, 27% SPANDEX ULTRASOFT PEACHED JERSEY

SIZES AVAILABLE:

XS-2XL

LABELS & PACKAGING:

Label:

Placement:

Standard Main Label

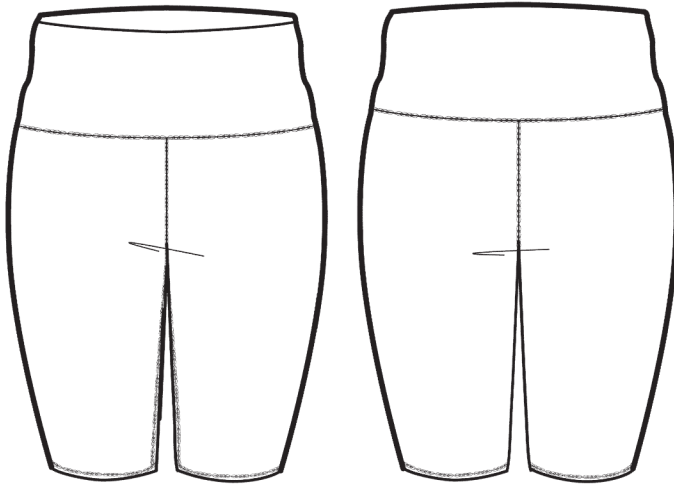
CB WB Printed

Standard Size Label

Inside CB seam or Print @WB

Care Label

Inside CB seam or Print @WB



Special Instructions:

FINISHED MEASUREMENTS:

P.O.M- Inches	XS	S	M	L	XL	2XL	3XL	4XL
A-INSEAM	9 5/8"	10 1/8"	10 5/8"	10 7/8"	11 1/8"	11 5/8"		
B- Waist at top of band	10"	11"	12"	13"	14"	15"		
C- Hips- 3" down from WB Seam	14 3/8"	15 5/8"	16.5"	16 3/4"	17"	18 1/4"		

Style Sheet Disclaimer:

This is a Technical Specification Sheet with Points of Measurement (P.O.M). This is a technical design document used as a guide for production consistency. Style sheets are not intended to be used as a Sizing Chart nor to be given directly to customers. As per industry standard there is a tolerance of +/- one inch on measurements. Knitwear specs are based on flat lay measurements. Woven specs are based on circumference. To retain the garment's best condition & longevity please follow appropriate care instructions. (edited)