

T6 STYLE #:

STYLE SHEET

W151-ST022

155

STYLE NAME:

HOODIE DRESS - 155

DESCRIPTION:

WOMEN'S LS PULLOVER HOODED DRESS

FABRIC: **#ST022**

FRENCH TERRY 95/5 POLY SPANDEX, 250-255 GSM

SIZES AVAILABLE:

XS----3XL

LABELS & PACKAGING:

Label:

Placement:

Standard Main Label

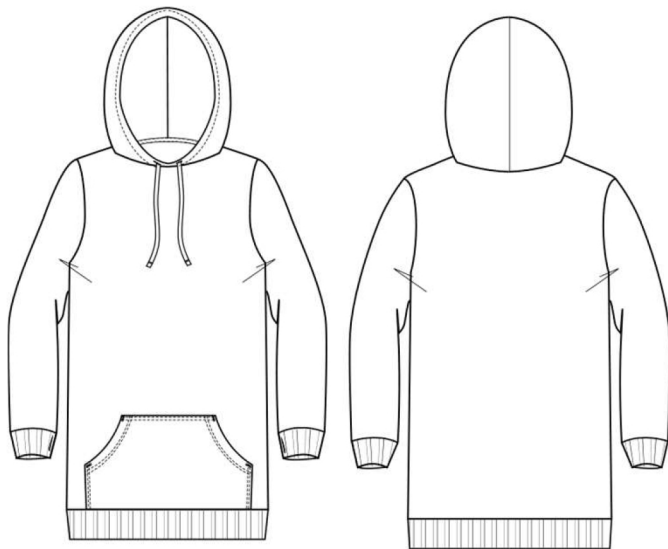
Inside CB

Standard Size Label

Inside CB

Care Label

W-Inside left SS, 3" up hem



Special Instructions:

FINISHED MEASUREMENTS:

P.O.M- Inches		XS	S	M	L	XL	2XL	3XL
A- Length: HPS to Hem Edge		30 1/2	31	31 5/8	32 3/8	32 7/8	33 3/4	34 3/8
B- Chest: 1" Below & Across		17 3/4	18 3/4	19 3/4	20 3/4	21 3/4	23	24 1/8

Style Sheet Disclaimer:

This is a Technical Specification Sheet with Points of Measurement (P.O.M). This is a technical design document used as a guide for production consistency. Style sheets are not intended to be used as a Sizing Chart nor to be given directly to customers. As per industry standard there is a tolerance of +/- one inch on measurements. Knitwear specs are based on flat lay measurements. Woven specs are based on circumference. To retain the garment's best condition & longevity please follow appropriate care instructions. (edited)