

T6 STYLE #:

STYLE SHEET

W546-ST007

222A

STYLE NAME:

DESCRIPTION:

FABRIC: **#ST007**

SIZES AVAILABLE:

HOODIE CROP LS - 222A

WOMEN'S CROPPED LONG SLEEVE HOODIE

100% POLYESTER FLEECE, 300 GSM, WIND ARMOUR

XXS----XXL

LABELS & PACKAGING:

Label:

Standard Main Label

Standard Size Label

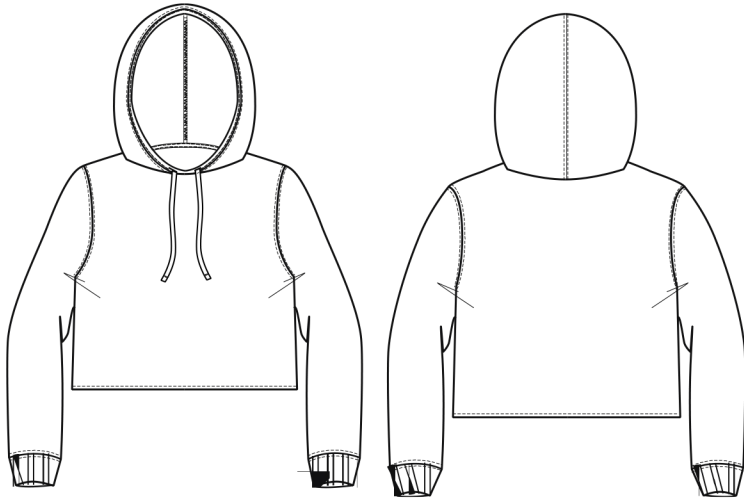
Care Label

Placement:

Inside CB

Inside CB

W-Inside left SS, 4" up hem



Special Instructions:

FINISHED MEASUREMENTS:

P.O.M- Inches	XXS	XS	S	M	L	XL	2XL	
A- Length: HPS to Hem Edge	15	15 5/8	16 1/8	16 7/8	17 3/8	17 7/8	18 3/4	
B- Chest 1" below armhole	16	16 5/8	17 1/2	18 1/2	19 1/2	21 1/8	22 5/8	

Style Sheet Disclaimer:

This is a Technical Specification Sheet with Points of Measurement (P.O.M). This is a technical design document used as a guide for production consistency. Style sheets are not intended to be used as a Sizing Chart nor to be given directly to customers. As per industry standard there is a tolerance of +/- one inch on measurements. Knitwear specs are based on flat lay measurements. Woven specs are based on circumference. To retain the garment's best condition & longevity please follow appropriate care instructions. (edited)