

T6 STYLE #:

STYLE SHEET

W506-ST014

149

STYLE NAME:

LEG 5-PAN CROP - 149

DESCRIPTION:

WOMEN'S CROPPED LEGGING- 5 PANEL (22")- FLATLOCK
73% DTY POLY, 27% SPANDEX ULTRASOFT PEACHED JERSEY

FABRIC: #ST014

SIZES AVAILABLE:

XS---2XL

LABELS & PACKAGING:

Label:

Standard Main Label

Standard Size Label

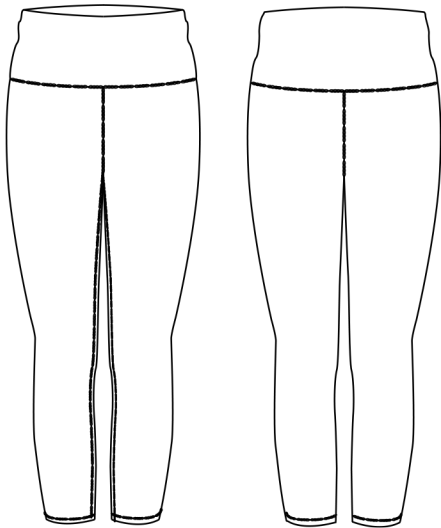
Care Label

Placement:

Inside CB- Printed

Inside CB

Inside CB seam



Special Instructions:

FINISHED MEASUREMENTS:

P.O.M- Inches	XS	S	M	L	XL	2XL	3XL	4XL
A- Inseam	21	22	23	24	25	26	27	28
B- Waist	10	11	12	13	14	15	16	17
C- Hips	14 1/4	15 1/4	16 1/4	17 1/4	18 1/4	19 1/4	20 1/4	21 1/4

Style Sheet Disclaimer:

This is a Technical Specification Sheet with Points of Measurement (P.O.M). This is a technical design document used as a guide for production consistency. Style sheets are not intended to be used as a Sizing Chart nor to be given directly to customers. As per industry standard there is a tolerance of +/- one inch on measurements. Knitwear specs are based on flat lay measurements. Woven specs are based on circumference. To retain the garment's best condition & longevity please follow appropriate care instructions.