

T6 STYLE #:

## STYLE SHEET

W017-ST008

302

STYLE NAME:

LEG 5-PAN FOIL - 302

DESCRIPTION:

WOMEN'S FULL LENGTH LEGGING- 5 PANEL

FABRIC: #ST008

82% POLYESTER 18% SPANDEX TRICOT WITH FOIL, 190 GSM

SIZES AVAILABLE:

XS, S, M, L, XL

### LABELS & PACKAGING:

Label:

Placement:

Standard Main Label

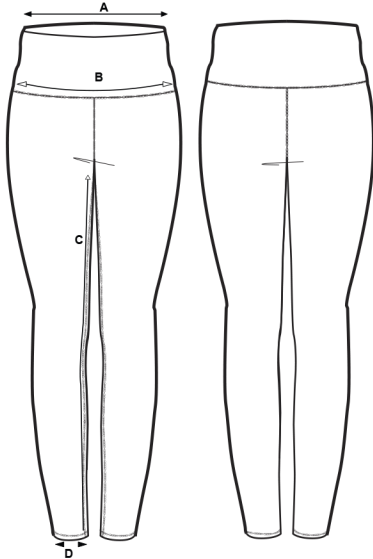
CB WB Printed

Standard Size Label

Inside CB seam-or Print @ WB

Care Label

Inside CB seam-or Print @ WB



### Special Instructions:

### FINISHED MEASUREMENTS:

P.O.M- Inches	XS	S	M	L	XL	2XL	3XL	4XL
A-INSEAM	27	27 1/2	28	28 1/2	29			
B- WAIST @ TOP OF BAND	10	11	12	13	14			
C- HIPS 3" DOWN FROM WB SEAM	14 1/4	15 1/4	16 1/4	17 1/4	18 1/4			

### StyleSheet Disclaimer:

This is a Technical Specification Sheet with Points of Measurement (P.O.M). This is a technical design document used as a guide for production consistency. Style sheets are not intended to be used as a Sizing Chart nor to be given directly to customers. As per industry standard there is a tolerance of +/- one inch on measurements. Knitwear specs are based on flat lay measurements. Woven specs are based on circumference. To retain the garment's best condition & longevity please follow appropriate care instructions.