

T6 STYLE #:

STYLE SHEET

W577-ST001

293

STYLE NAME:

BRA SPORT ZIP - 293

DESCRIPTION:

SPORTS BRA WITH HALF ZIP AND BANDED COLLAR

FABRIC: #ST001

82% POLY 18% SPANDEX, 220 GRM, 61"-PERFOTEK ULTRASOFT

SIZES AVAILABLE:

XXS-----2XL

LABELS & PACKAGING:

Label:

Placement:

Main Label:

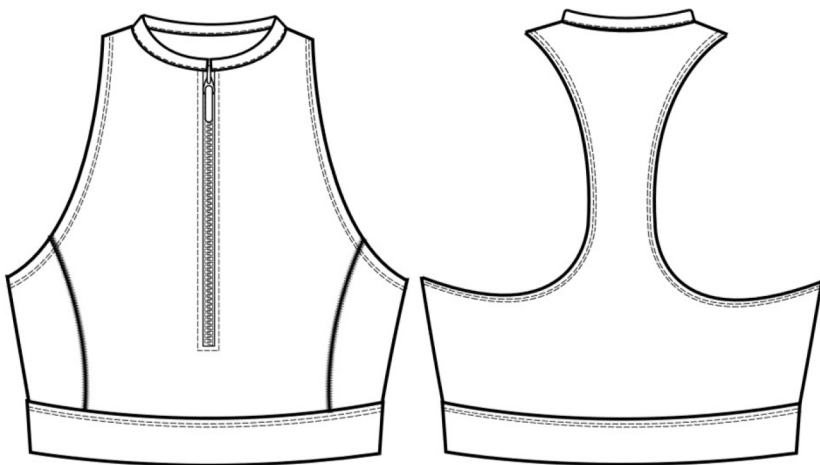
Inside CB

Size Label:

Inside CB

Care Label

W-left Side Back Side Seam



Special Instructions:

FINISHED MEASUREMENTS:

P.O.M- Inches	XXS	XS	S	M	L	XL	2XL	3XL	4XL
A- Length: HPS to Hem Edge	12	13	14	15	16	17 1/2	19		
B- Chest- Across 1" blw Armhole	11 7/8	12 7/8	13 7/8	14 7/8	15 7/8	17 1/8	18 3/8		
C- Bottom width @ Bottom of Band	10 1/4	11 1/4	12 1/4	13 1/4	14 1/4	15 1/2	16 3/4		

Style Sheet Disclaimer:

This is a Technical Specification Sheet with Points of Measurement (P.O.M). This is a technical design document used as a guide for production consistency. Style sheets are not intended to be used as a Sizing Chart nor to be given directly to customers. As per industry standard there is a tolerance of +/- one inch on measurements. Knitwear specs are based on flat lay measurements. Woven specs are based on circumference. To retain the garment's best condition & longevity please follow appropriate care instructions.