

T6 STYLE #:

STYLE SHEET

W546-AC001

222B_SU

STYLE NAME:

HOODIE CROP LS 65X35 -222B_SU

DESCRIPTION:

WOMEN'S CROPPED LONG SLEEVE HOODIE IN 65X35-RELAX FIT
65/35 POLYESTER RAYON BRUSHED FLEECE, 10.5 OZ

FABRIC: #AC001

SIZES AVAILABLE:

XXS----XL

LABELS & PACKAGING:

Label:

Placement:

Standard Main Label

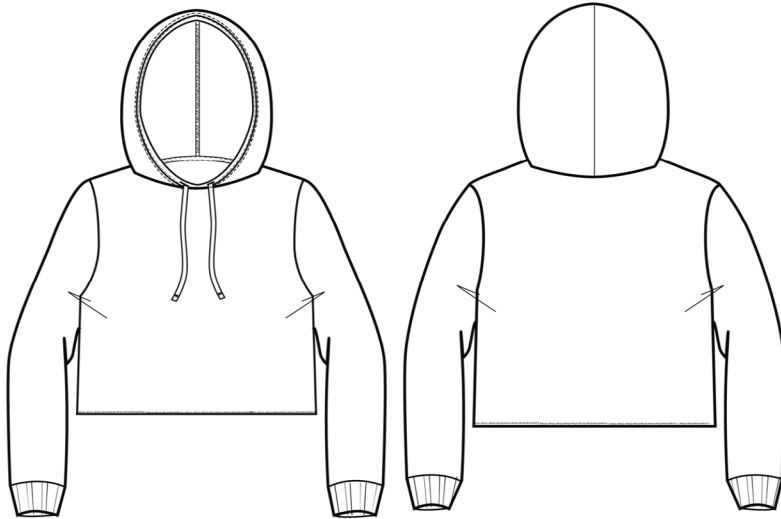
Inside CB

Standard Size Label

Inside CB

Care Label

W-Inside left SS, 4" up hem



Special Instructions:

*DUE TO BLENDED FABRIC COMPOSITION, PRINT MAY
APPEAR MUTED IN COLOR*

FINISHED MEASUREMENTS:

P.O.M- Inches	XXS	XS	S	M	L	XL		
A- Length: HPS to Hem Edge	15 5/8	16 1/8	16 7/8	17 3/8	17 7/8	18 3/4		
B- Chest 1" below armhole	16 5/8	17 1/2	18 1/2	19 1/2	21 1/8	22 5/8		

Style Sheet Disclaimer:

This is a Technical Specification Sheet with Points of Measurement (P.O.M). This is a technical design document used as a guide for production consistency. Style sheets are not intended to be used as a Sizing Chart nor to be given directly to customers. As per industry standard there is a tolerance of +/- one inch on measurements. Knitwear specs are based on flat lay measurements. Woven specs are based on circumference. To retain the garment's best condition & longevity please follow appropriate care instructions.