

T6 STYLE #:

STYLE SHEET

W155-ST025

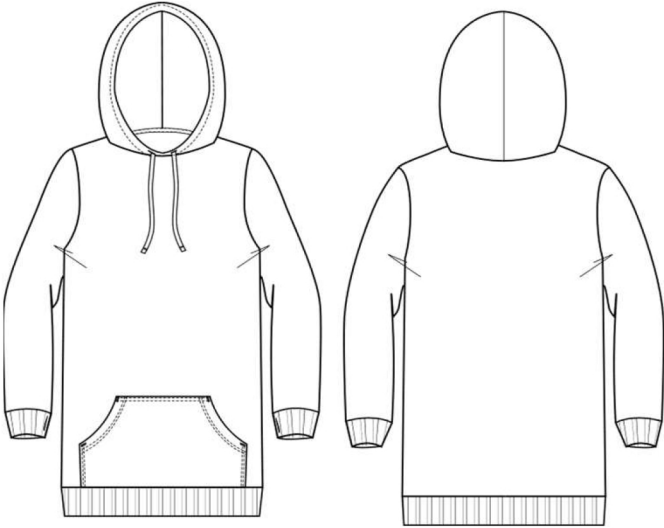
155C

STYLE NAME:  
DESCRIPTION:  
FABRIC: #ST025  
SIZES AVAILABLE:

DRESS HOODIE VELVET - 155C  
WOMEN'S LS PULLOVER HOODED DRESS  
90% POLYESTER 10% SPANDEX, CRUSHED VELVET, 380 GSM  
XS----3XL

LABELS & PACKAGING:

Label:	Placement:
Standard Main Label	Inside CB
Standard Size Label	Inside CB
Care Label	W-Inside left SS, 4" up hem



Special Instructions:

FINISHED MEASUREMENTS:

P.O.M- Inches		XS	S	M	L	XL	2XL	3XL
A- Length: HPS to Hem Edge		28 3/8	28 7/8	29 3/8	30 1/8	30 3/4	31 5/8	32 1/4
B- Chest: 1" Below & Across		16 5/8	17 5/8	18 5/8	19 5/8	20 5/8	21 7/8	23

Style Sheet Disclaimer:  
This is a Technical Specification Sheet with Points of Measurement (P.O.M). This is a technical design document used as a guide for production consistency. Style sheets are not intended to be used as a Sizing Chart nor to be given directly to customers. As per industry standard there is a tolerance of +/- one inch on measurements. Knitwear specs are based on flat lay measurements. Woven specs are based on circumference. To retain the garment's best condition & longevity please follow appropriate care instructions. (edited)