

T6 STYLE #:

STYLE SHEET

Y073-AC001

228

STYLE NAME:

HOODIE YTH 65X35- 228

DESCRIPTION:

YOUTH PULLOVER HOODIE WITH PATCH POCKETS

FABRIC: #AC001

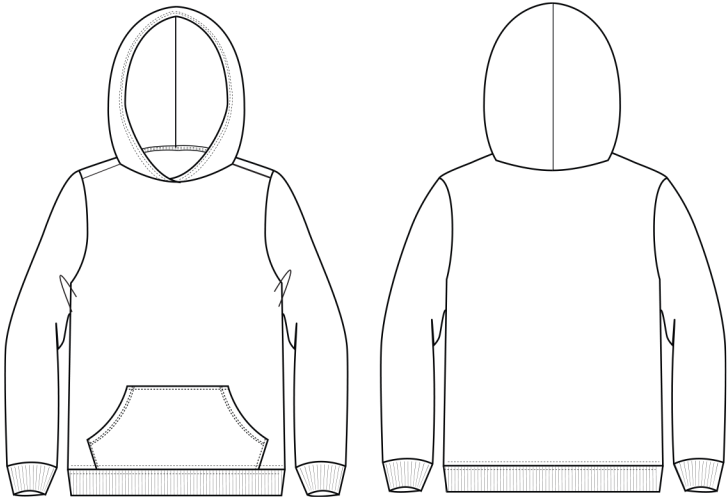
65/35 POLY RAYON LOOP TERRY FLEECE, 14 OZ., 68-70"

SIZES AVAILABLE:

6, 8, 10, 12

LABELS & PACKAGING:

| Label:      | Placement:       |
|-------------|------------------|
| Main Label: | Inside CB        |
| Size Label: | Inside CB        |
| Care Label  | W-Left Side Seam |



Special Instructions:

\*DUE TO BLENDED FABRIC COMPOSITION, PRINT MAY  
APPEAR MUTED IN COLOR\*

FINISHED MEASUREMENTS:

| P.O.M- Inches                   |  | 6      | 8      | 10     | 12     |  |  |  |  |
|---------------------------------|--|--------|--------|--------|--------|--|--|--|--|
| A- Length: HPS to Hem Edge      |  | 21 1/8 | 22 1/8 | 23 1/8 | 24 1/8 |  |  |  |  |
| B- Chest- Across 1" blw Armhole |  | 17 1/2 | 18 1/2 | 19 1/2 | 20 1/2 |  |  |  |  |
| C- Waist                        |  | 16 3/4 | 17 3/4 | 18 3/4 | 19 3/4 |  |  |  |  |

Style Sheet Disclaimer:

This is a Technical Specification Sheet with Points of Measurement (P.O.M). This is a technical design document used as a guide for production consistency. Style sheets are not intended to be used as a Sizing Chart nor to be given directly to customers. As per industry standard there is a tolerance of +/- half inch on measurements. Knitwear specs are based on flat lay measurements. Woven specs are based on circumference. To retain the garment's best condition & longevity please follow appropriate care instructions.